

GALLERY RUNNER



Julian Sharples

Adam Buick Adam Lee Linder Adboulaye Konate

jas AES+F Agnes Ma **Contents** Wei Akram Zaatari

eksandra Mir Alessandro Raho Alexander Calder

large **2 Origins in the Frieze Art Fair** Alfredo

4 30 Galleries 1200 Artists Ilceja Kwade Agnieszka Bochar Anna Szapocznikow

6 The Regent's Canal Run Izadilla Alvaro Barrington Ivin Ong Amalia

8 Sculpture in the City is Anwar

10 Five Runs Map is Anwar Buttner Andrea

12 The Line Andre Butzer Andrew Cranston Andrew

14 Parkland Walk lewski Andy Warhol Angela de la Cruz Anish

16 In Search of John Ruskin Anna Bella Pappa Anna Pierson Anna Zacharoff Ann

18 From Asheville to Rome rone

20 Stepping Inside Anselm Kiefer

toni Tapes Antony Gormley Anwar

Giorgiou Armen Eloyan Arnulf Rainer **A R Penck**

Augustus Thompson Austin Emery Ayan Farah BANK

ilhazes Becky Beasley Bedwyr Williams Beers London

ernard Cohen Betty Parsons Bex Simon Bharti Kher Bill

ck Mountain College Black Mountain College Museum Blair

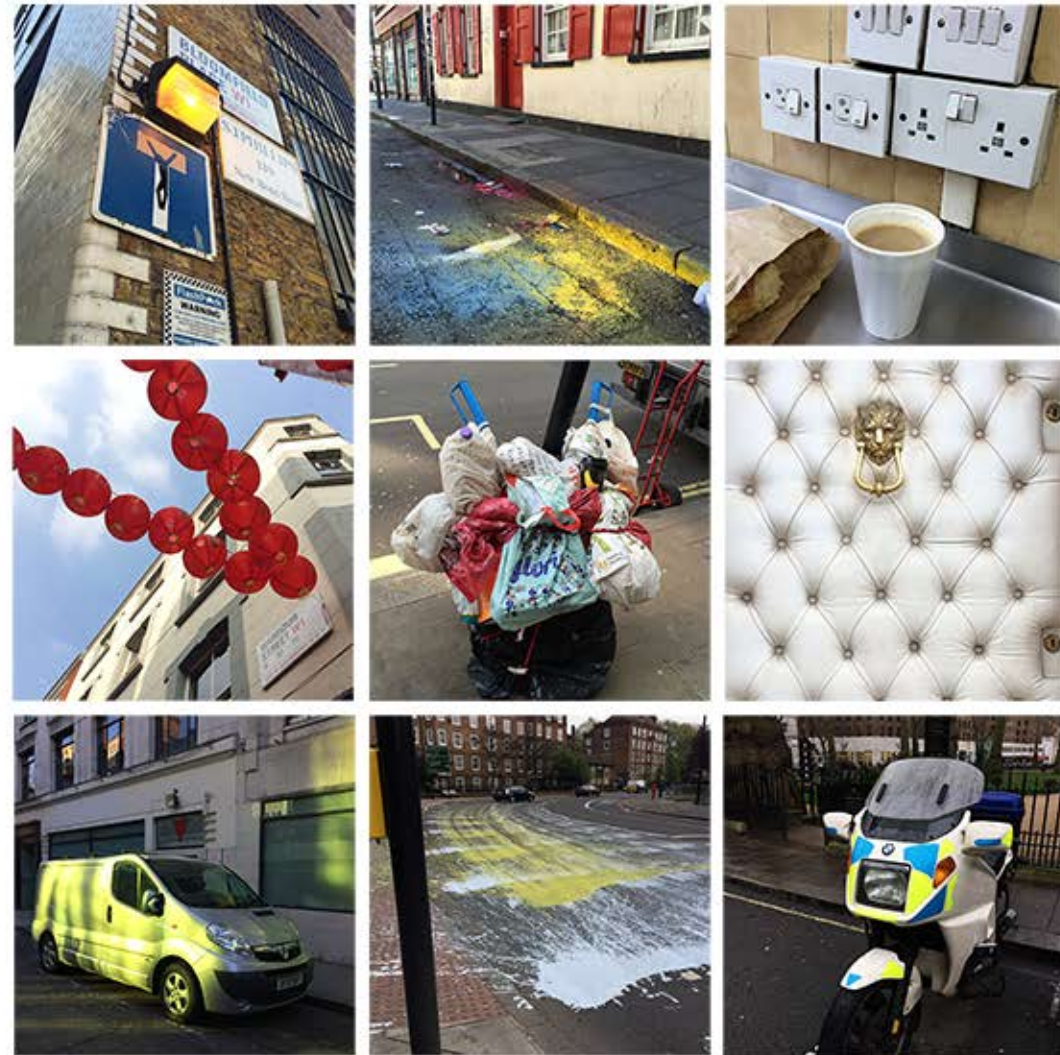
Origins in the Frieze Art Fair

I am a keen runner and gallery visitor. Once a year the galleries come together in an art fair called Frieze, an event in Regent's Park. At that moment they leave the cities' maps and enter the rows and columns of exhibition booths.

This shuffling together of the galleries made me think of their relations and how visiting them could create a new experience. This would involve running and an Instagram identity called Gallery Runner.

There would be canals, barges, galleries and many calories on the way. Then, certain runs became memorable and these are presented in this booklet.

In respect of artist copyright, my indoor images shall be restricted to Instagram and not feature here. But there are many outdoor artworks that make these runs a joy. Finally, you may notice how important waterways and tall buildings become for navigation, in these city landscapes.

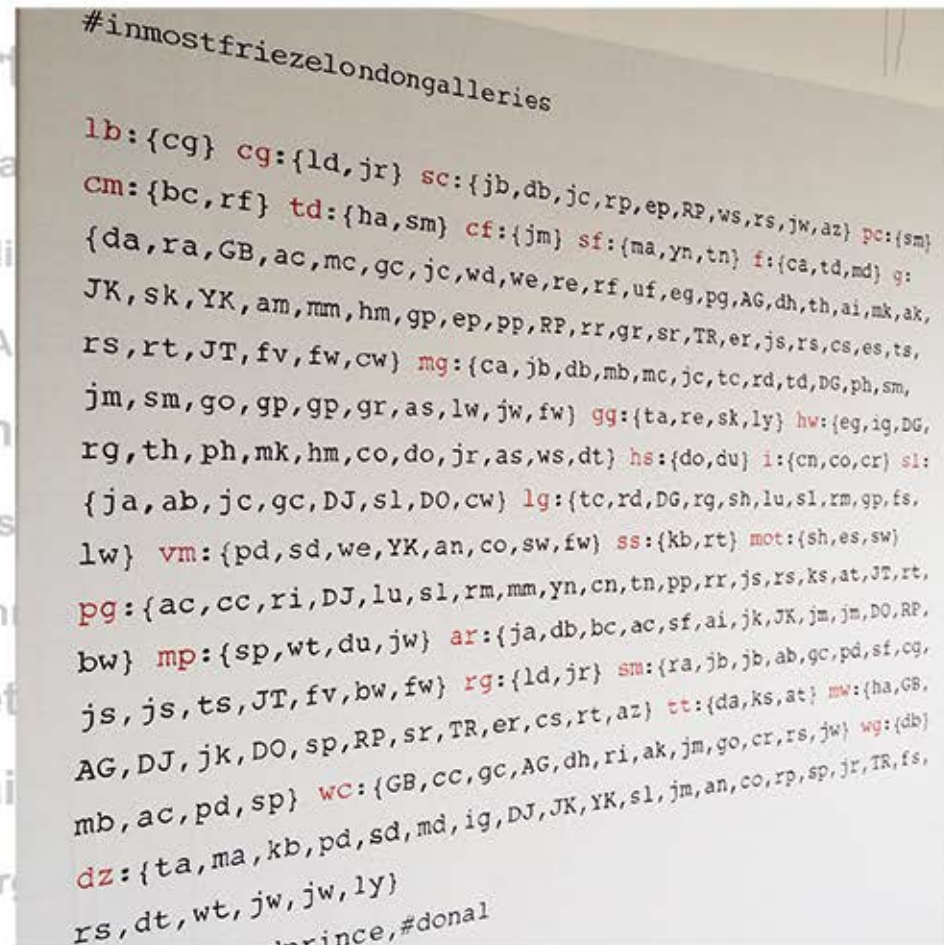


Meanwhile on the streets between the galleries the hobbies, foibles and chance happenings of normal people all have a new context and some of these are slipped in amongst the images of artworks.

Deciphering 30 London Galleries and 1200 Artists from Frieze



The patterns start to emerge from this group of 1200 artists, with five artists called Florian, shown above.



Meanwhile, 30 galleries have grouped these artists into their rosters. Some artists appear under several galleries with Richard Prince apparently sitting happily at the intersection of four of them. Oh, to be in Frieze so often!

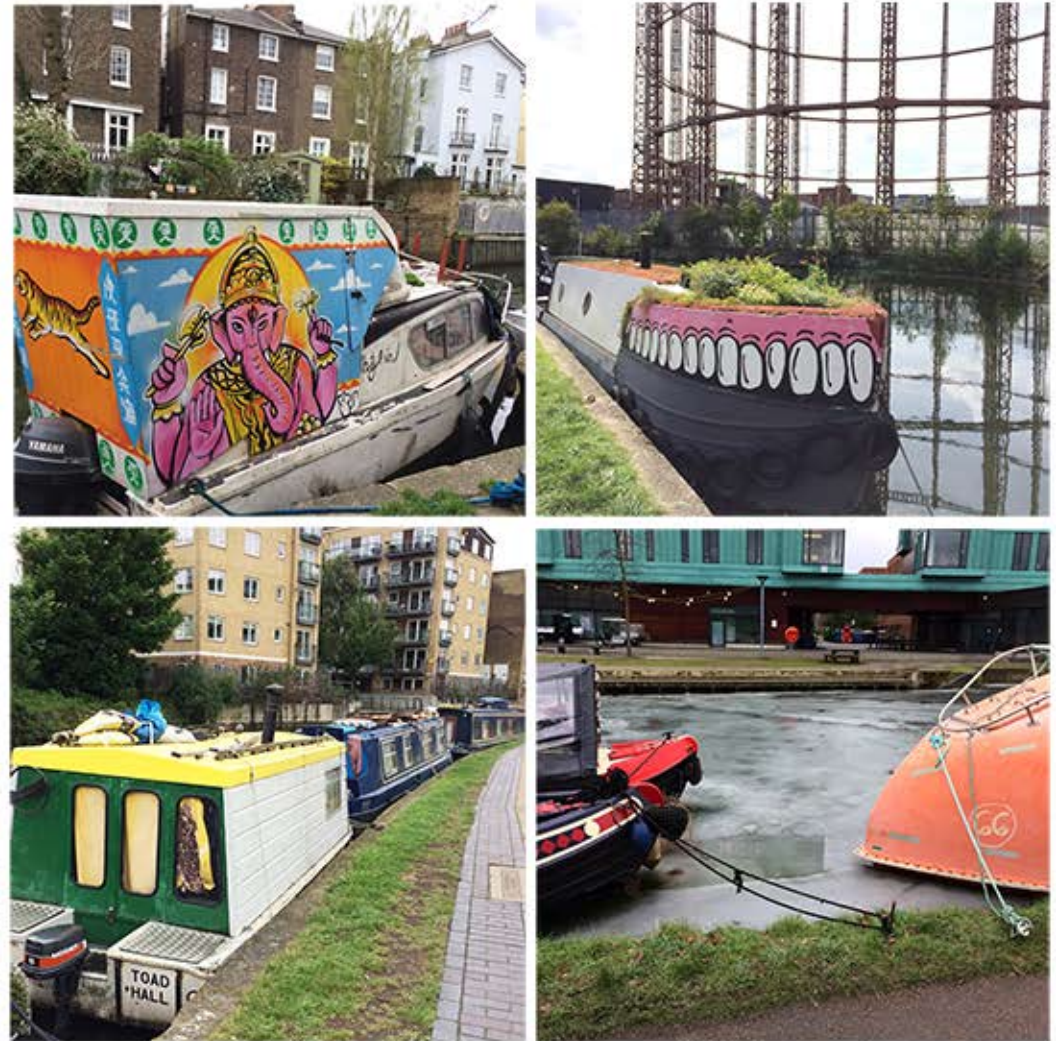
The Regent's Canal Run

The Regent's Canal run, shown on the centre spread, takes in all 30 galleries over a 27 mile circuit. The canal is a travelling companion no less and along its towpath are exits leading to the day's galleries.

St James' Park, still cool and dewy, gives a foretaste of the canal with its watery vistas. It spills into Green Park and this in turn into Hyde Park before the rendezvous with the canal itself a little further north at the Paddington Basin. On the waterway, Lisson Gallery and Victoria Miro are about twenty bridges apart across a whole swathe of London. But that interval is lost amongst the smells of woodburning stoves.

Stuart Shave's gallery, has some interesting work made with light bulb holders screwed onto a wooden board. Green paint has been applied casually to the ensemble. Elsewhere there are plastic washing up bowls with black, rubber sheet providing a sense of DIY and one that I am already receptive to having seen it on the canal.

Back on the waterway, this aesthetic is indeed rekindled! Orange lifeboats have been fitted with portholes, barges have cartoon teeth, whilst small fibreglass cruisers have plywood extensions to win a few more feet of living space.



Boats and Barges on the Regent's Canal

Sculpture in the City

It is a hot day in London and the sculptures are glowing. There are about twenty works from top quality artists here, as well as the information points and a mobile app that help define the trail.

The artworks festoon an old Roman Road, now known as the A10. Pedestrian crossings link one assembly point to the next as small groups congregate and check their mobile phones for where to go next.

Up a narrow street, near Leadenhall Market the Cheesegrater looms overhead. In a plaza, Michael Lyons' *Centaurus* is standing on a square base, its elevated head seemingly picking out due south in the sky or some distant constellation. The exact alignment of the square plinth to the plaza's grid and to the skyscrapers beyond, implicates them too in this cosmic arrangement. Meanwhile two giant stainless steel gherkins evoke a much loved building nearby and a tree has a rock in it.

Later, as I am running along the Thames the same buildings are visible from afar and the whole hub rotates with a final sweep of the Thames. An evening sunset adds some tips of red to this ensemble whilst the glowing slope of the Cheesegrater is doing just as its architect had intended and what I had now been primed to notice, namely, facing due south. London's compass!



Centaurus, by Michael Lyons,
aligned to the plaza's flagstones.



THE REGENT'S CANAL GALLERY RUN

PLUS
SCULPTURE IN THE CITY (City of London)
THE LINE SCULPTURE TRAIL (To the East)
PARKLAND WALK (To the North)
IN SEARCH OF RUSKIN (Oxford)

The Line

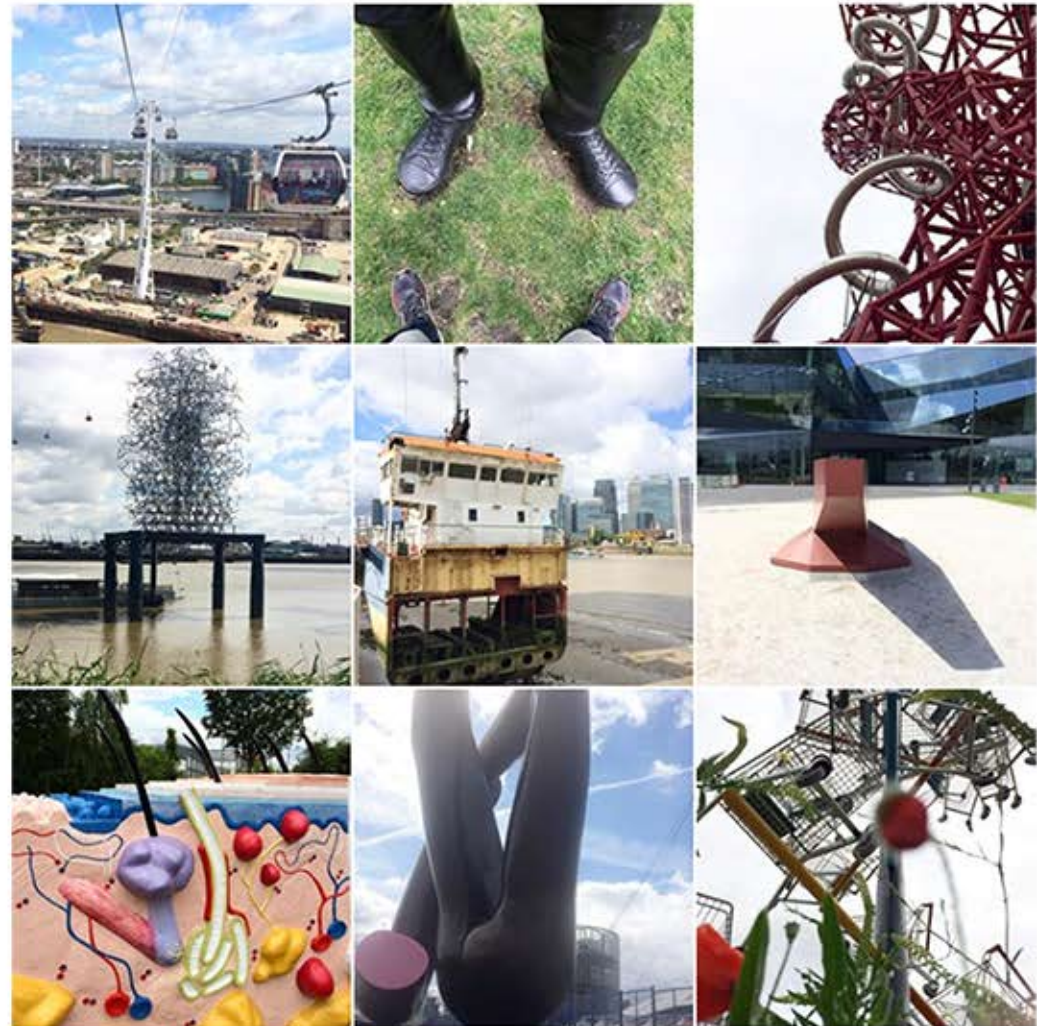
With the galleries on summer holiday, I decided to check out The Line sculpture trail which follows the watery route of the Thames and then the River Lea. Early on, a sliced-up ship by Richard Wilson comes into view. It can't float but seems to have a fully functioning bridge behind plexiglass and even an office table. Below, are the waves of the river.

Then a ride on a cable car follows, bumping over pulleys and into the Docklands. It's a long way down but a great view. Stirling Ruby's canon-like object is the pick here.

After this is an enforced departure from all things nautical as the Lea makes two giant swings amongst the mud and detritus of industrial estates before emptying into the Thames. There is no cause for concern however, since just a little way up river is a tranquil footpath and ancient reed beds. We are also following the Meridian due north!

Then in the distance something that looks like a giant trifle appears with brightly coloured fruits. Closer up it resembles a 2D illustration, which I recognise to be of skin. Damien Hirst has made many such sculptures and whilst being beautiful they have a disturbing mortality about them. Here, this effect of 'memento mori' is provided by the giant black hairs on top. They have a simplicity to them, curving like the reeds and nature nearby but still looking sinister.

galleryrunner 9+



Parkland Walk

Parkland Walk is a nature reserve created from an old railway used until 1970. Graffiti and nature have softened the sharp, angular forms of station platforms. Meanwhile, walkers and cyclists barely notice the gentle gradient of this green corridor as it rises slowly up to Highgate from Finsbury Park. In just twenty five minutes these two areas formerly worlds apart have been connected by a wormhole!



14



Indeed, this is a good route to Camden Arts Centre and in the garden Anya Gallaccio has made an artwork from rope draped across the trees. Frayed, brown strands are joined with knots and cross-links. A line of trees is supporting a particularly long artwork (above) that has been anchored to the gallery roof. It forms a comforting enclosure for the visitors who are sitting outside enjoying the ambient nature whilst having tea and cakes.

15

In Search of John Ruskin

This week I went to Oxford in search of John Ruskin, a 19th Century artist, writer and inspiration to Marcel Proust. In Oxford, he had set up the Ruskin School of Art and in nearby North Hinksey he would even build a road!

The jog out to North Hinksey from Oxford goes over several small rivers, tributaries to the Thames, stirred up by rain from the Cotswolds and Chilterns. At the village itself, upon Ruskin's arrival and after disembarking a ferry, he would often have seen an impassable muddy track. For my own arrival, there is his art on view, a road, though covered now with a layer of black asphalt.

It was built by Ruskin and several of his students, including a young Oscar Wilde! This was their project over one summer 150 years ago. The team laid the stones and a road was born and now a green plaque commemorates it on a nearby cottage.

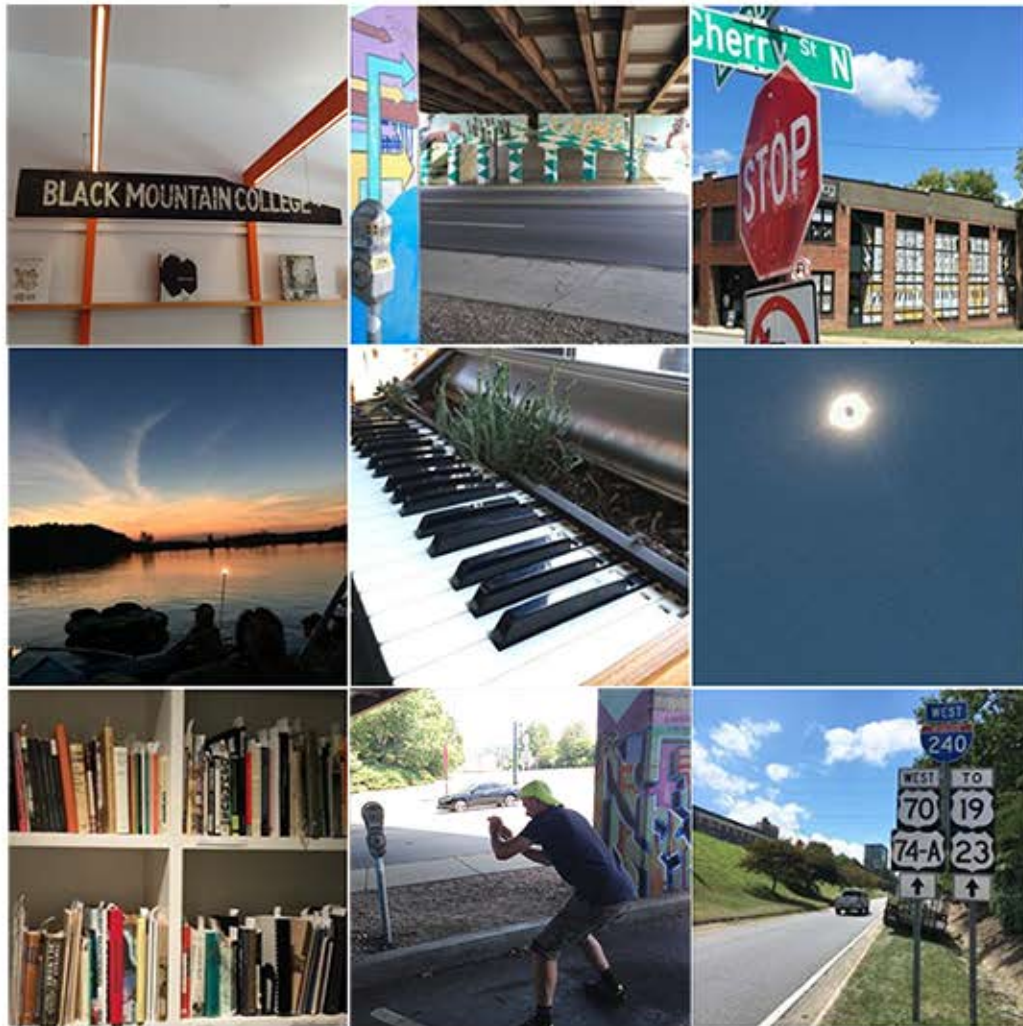
The return jog to Oxford would be along a spiral route aiming to penetrate the city through parkland and college grounds whilst distant spires serve as a guide. Cricket pitches and an observatory pass by before a sense of private property starts to take over. Finally a bridge festooned with barbed wire brings the run to a halt. Unable to wade across the river, due to its soft bed, I head for the college lodge and evict myself into the city.



A pristine thatch and green plaque commemorate Ruskin's road.

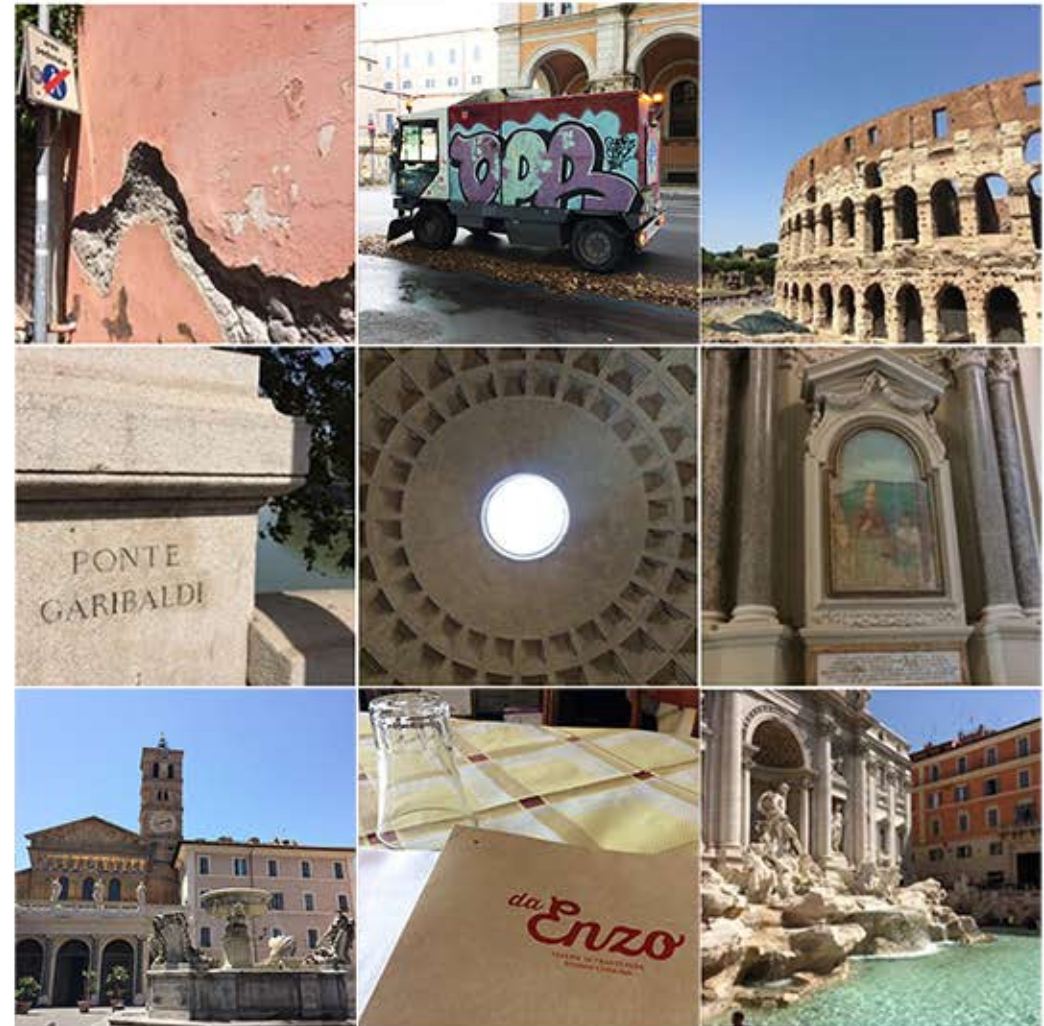
From Asheville to Rome

galleryrunner 9+



Black Mountain College was an iconic art school, with an impressive list of artists teaching there. At its museum in Asheville we learn the students grew their own food. It's also the 2017 eclipse!

galleryrunner 9+



Doing a gallery run and then posting it on Instagram seemed a good way to talk about the capital's art on The Rome Art Programme. We even discussed the etiquette of looking cool in 30 degrees of heat.

Stepping Inside

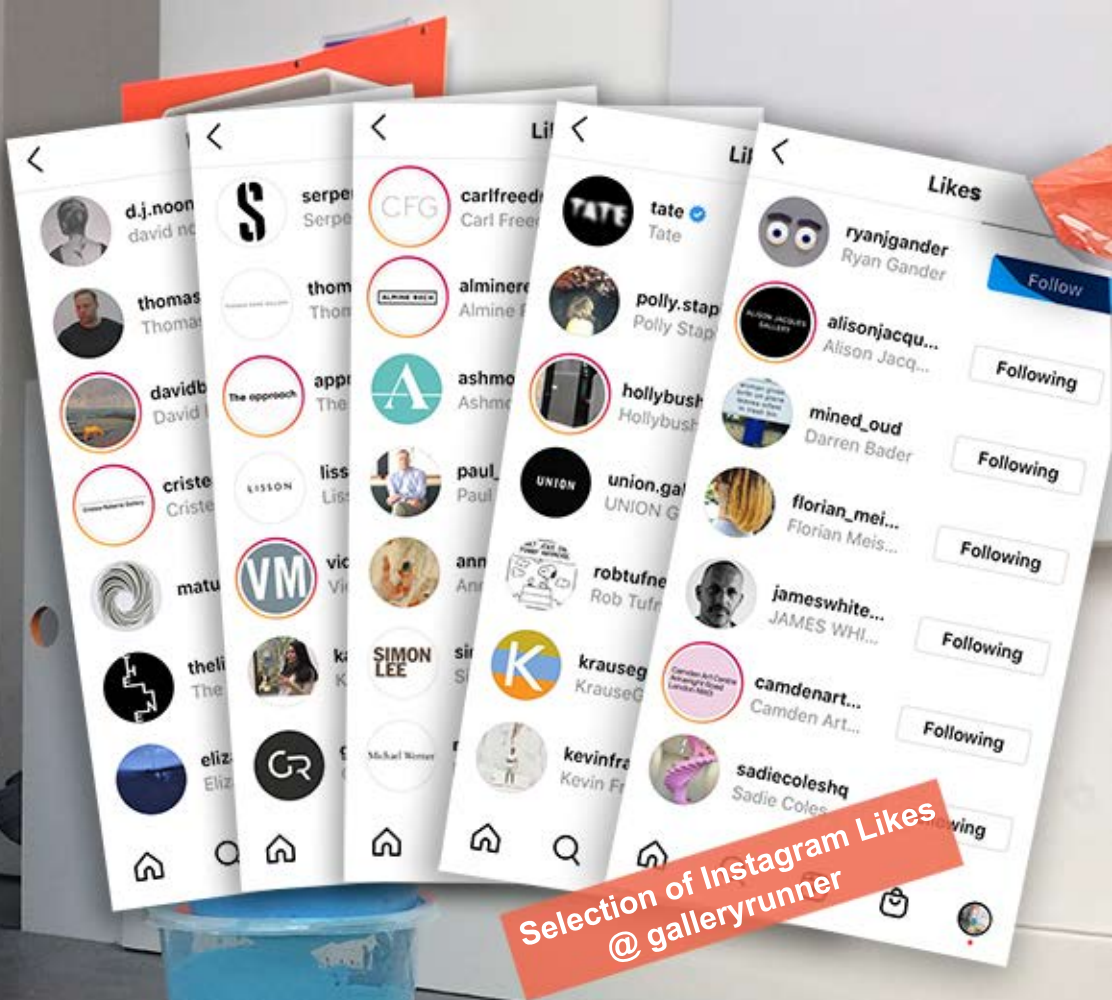
Part postcard and part map, below is a record of several runs tracked on GPS. It is the Regent's Canal run re-imagined as an Artathon. As we see here, the runs soon strayed beyond that loop. Extensions, transversals, reversals and new galleries would keep it interesting. Now it's time to ring the gallery buzzer and step inside.



- | | | |
|----------------------|----------------------|----------------------|
| 1. White Cube 1 | 10. Gagosian 1 | 22. Victoria Miro 2 |
| A. Mother's Tank Stn | 11. Lisson Gallery | 23. Hauser & Wirth |
| 2. Herald Street | 12. Michael Werner | 24. Marian Goodman |
| 3. Maureen Paley | 13. Sadie Coles HQ 1 | 25. Frith Street |
| 4. The Approach | 14. Gagosian 2 | 26. Sadie Coles HQ 2 |
| 5. Stuart Shave 1 | 15. Almine Rech | 27. Pilar Corrias |
| 6. Kate MacGarry | 16. Simon Lee | 28. Alison Jacques |
| B. Hales | 17. Timothy Taylor | D. Amanda Wilkinson |
| 7. Victoria Miro 1 | 18. David Zwirner | 29. White Cube 2 |
| 8. Stuart Shave 2 | C. Thaddaeus Ropac | 30. Thomas Dane |
| 9. Hollybush Gdns | 19. Sprueth Magers | 31. Leake Street |
| | 20. Pace | 32. Greengrassi |
| | 21. Stephen Friedman | 32. Corvi Mora |



The 'Radiator' with its zigzag pattern.



Running to galleries along
parks and canals
2016 - 2021